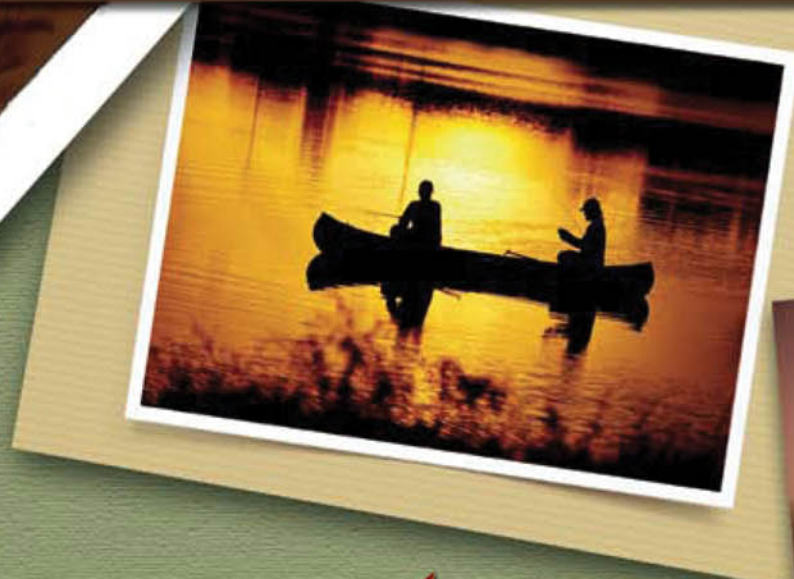


Go confidently into the direction of your dreams! Live the life you always imagined. *Thoreau*



Adventure

SERIES CABINS *by*



33 Available Floor Plan Options

A photograph of a sunset over a field of tall grasses. The sun is a bright, glowing orb in the upper left quadrant, casting a warm, golden light across the scene. The grasses are silhouetted against the bright sky, with some catching the light and appearing to glow. The overall mood is peaceful and expansive. The text "Expand Your Horizons..." is centered in the middle of the image in a bold, white, sans-serif font.

Expand Your Horizons...

Available Log Profiles



Round Log

6 1/2", 8", 9" or 10" Round Profiles



Square Log

6" x 12" or 8" x 12" Dovetail Corner System



D Log

8" or 9" "D" Profiles

Standard Adventure Series Package....

The Standard Adventure Series Package includes:

- Subfloor framing
- Subfloor sheathing
- Deck support posts treated
- Deck framing treated
- 5/4 Decking treated
- 8" Round or D pine logs
- Exposed Girder & Heavy Timber upper beams
- 2" T&G Second floor sheathing
- 2x4 gable & dormer wall framing
- 7/16 OSB wall sheathing
- Matching Exterior log siding for dormers & gables
- Ridge & Support Posts
- Exposed Heavy Timber rafters
- 1" T&G roof sheathing
- First layer of roof underlayment
- Two layers insulation (R-38)
- 5/4 furring strips
- 5/8 OSB roof sheathing
- Second layer of roof underlayment
- Wood windows & exterior doors
- Exterior 1x6 trim
- Drip cap & subfloor trim
- Exposed Heavy Timber porch rafters, beams & posts
- 2" T&G porch roof sheathing
- Roof underlayment
- 1x & 2x Fascia



Premium Adventure Series Package....

The Premium Adventure Series Package includes:

- All of the items in the Standard package, plus
- Interior stud partions
- 2x Interior stairs & railing
- Exterior log railing
- 1" T&G interior wall sheathing
- Interior sculptured trim
- Interior 6-panel solid wood doors
- First floor yellow pine T&G flooring

Upgrades to any log size or any log style are available for all Adventure Series models.



Please contact your local distributor for additional pricing options.

New Design: Whispering Pines

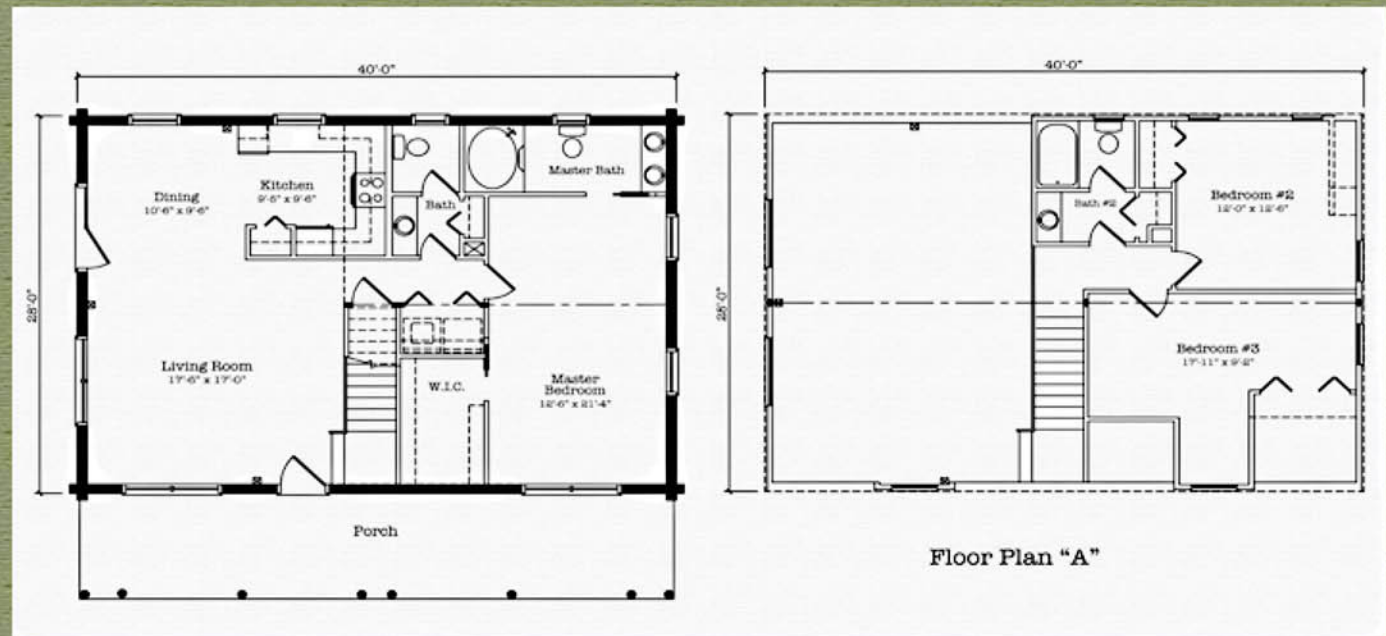


1640 Sq. Ft.

Whispering Pines is a modern classic. With a full master suite on the lower level plus an open floor plan, Whispering Pines makes a great retirement getaway. A total of 3 bedrooms and 2 1/2 or 3 baths accommodates guests & family in fine rustic style.

Available in two different floor plans.

Whispering Pines:
 28' x 40' Double Level
 3 Bedrooms
 2 1/2 or 3 Baths.
 1120 sq. ft. First Floor
 520 sq. ft. Second Floor
 1640 Total sq. ft.



Adventure Fact:
 We offer toll-free customer service and builder support.

New Design: Stonefly

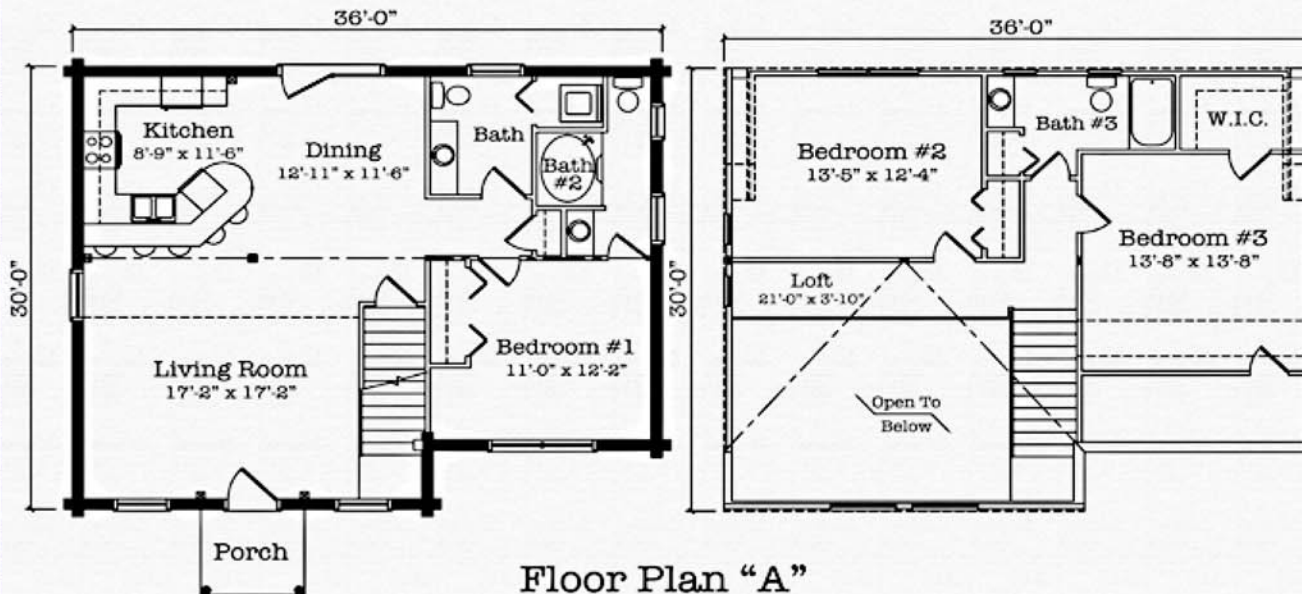


1624 Sq. Ft.

Stonefly blends traditional styling with today's open floor plan needs. Stonefly has 3 bedrooms and 2 1/2 or 3 1/2 baths making it a great weekend retreat. With a second full bath upstairs, Stonefly can accommodate guests and family in privacy and rustic style.



Available in two different floor plans.



Stonefly:
36' x 30' Double Level
3 Bedrooms
2 1/2 or 3 1/2 Baths.
1024 sq. ft.. First Floor
600 sq. ft. Second Floor
1624 Total sq. ft.

Note: To view the optional floor plan for this cabin and other cabins visit our web site; www.adventurelogcabins.com

Adventure Fact:
Penetreat log preservative is included in the Adventure Series materials package.

New Design: Ryans Retreat



1485 Sq. Ft.

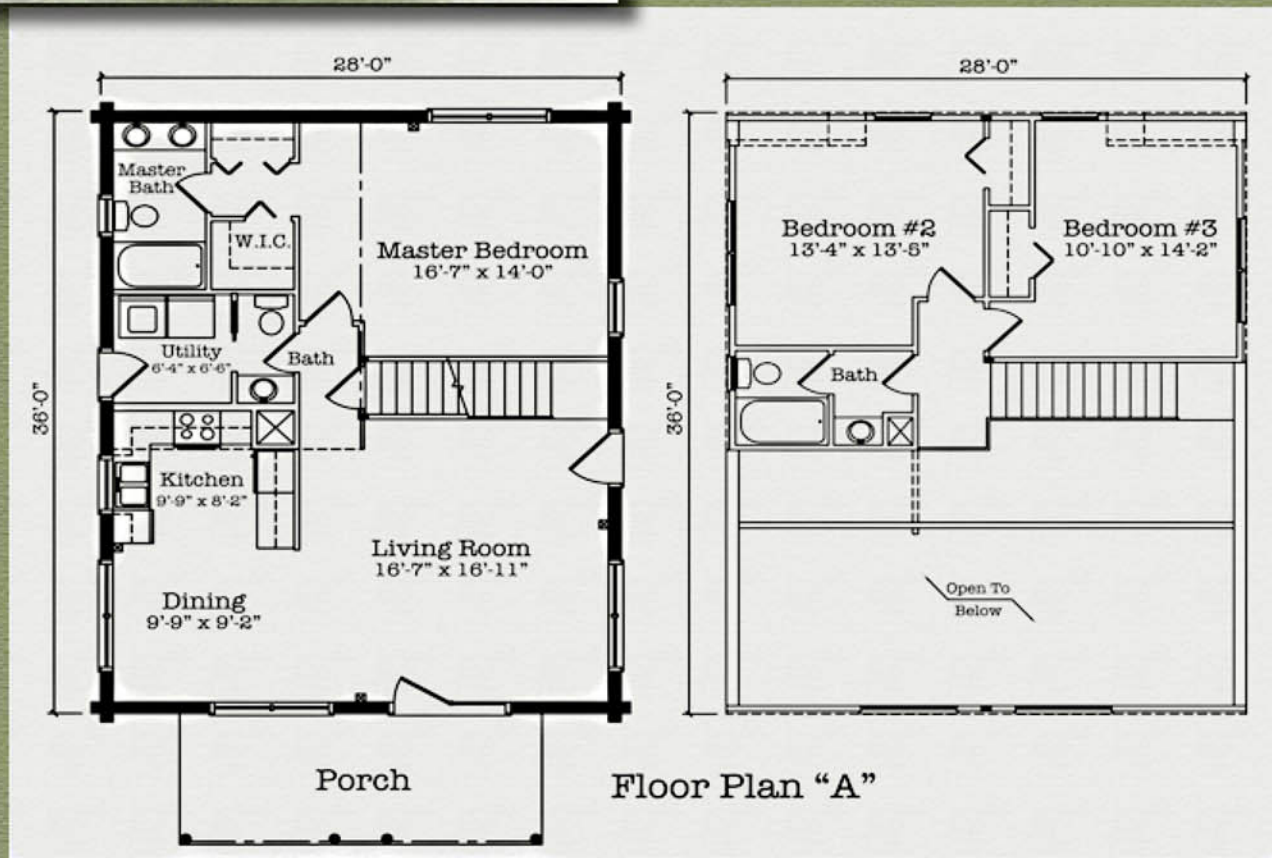
Ryans Retreat is a great choice for families who are looking for log cabin living and modern rustic style. With a full master suite on the lower level plus an open floor plan, Ryans Retreat makes a great getaway. With 2 or 3 bedrooms and 2 1/2 baths, there is plenty of space to stretch out in style.

Available in two different floor plans.

Ryans Retreat
 36' x 28' Double Level
 2 or 3 Bedrooms
 2 1/2 Baths.
 1008 sq. ft.. First Floor
 477 sq. ft. Second Floor
 1485 Total sq. ft.

Note: To view the optional floor plan for this cabin and other cabins visit our web site; www.adventurelogcabins.com

Adventure Fact:
 We offer a limited lifetime warranty on all log elements.



New Design: Logans Pass



1456 Sq. Ft.

Logans Pass is the great choice for active families looking for log cabin comfort and style. The open floor plan of Logans Pass has enough room for everyone to spread out and relax. With 3 or 4 bedrooms and a second full bath upstairs, Logans Pass offers privacy for family and friends.

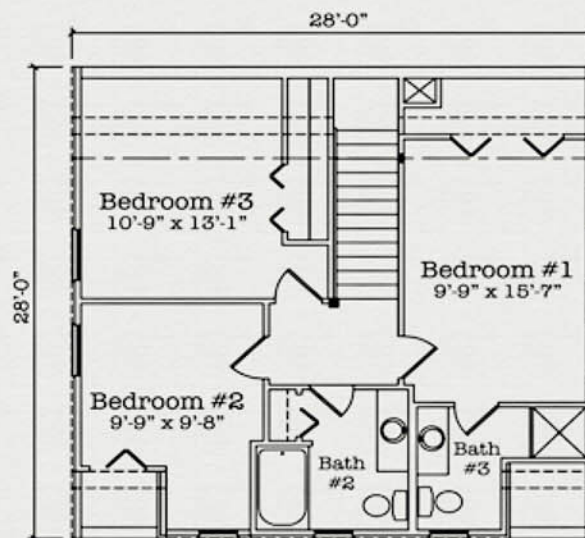
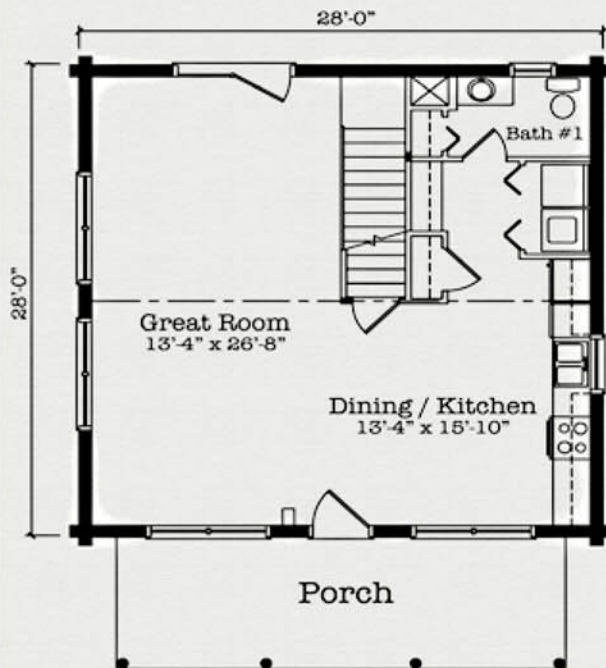


Available in two different floor plans.

Logan Pass:
28' x 28' Double Level
3 or 4 Bedrooms
2 or 2 1/2 Baths.
784 sq. ft.. First Floor
672 sq. ft. Second Floor
1456 Total sq. ft.

Note: To view the optional floor plan for this cabin and other cabins visit our web site; www.adventurelogcabins.com

Adventure Fact:
Nationwide "Best-In-Class"
Customer Service.



Floor Plan "A"

New Design: Hamilton Flatts



1408 Sq. Ft.

Hamilton Flatts offers great value for those looking for log cabin living and rustic style all on a single level. Hamilton Flatts has 2 or 3 bedrooms, 2 baths and a spacious open floor plan living area. It's a great choice, with an optional floor plan layout available.

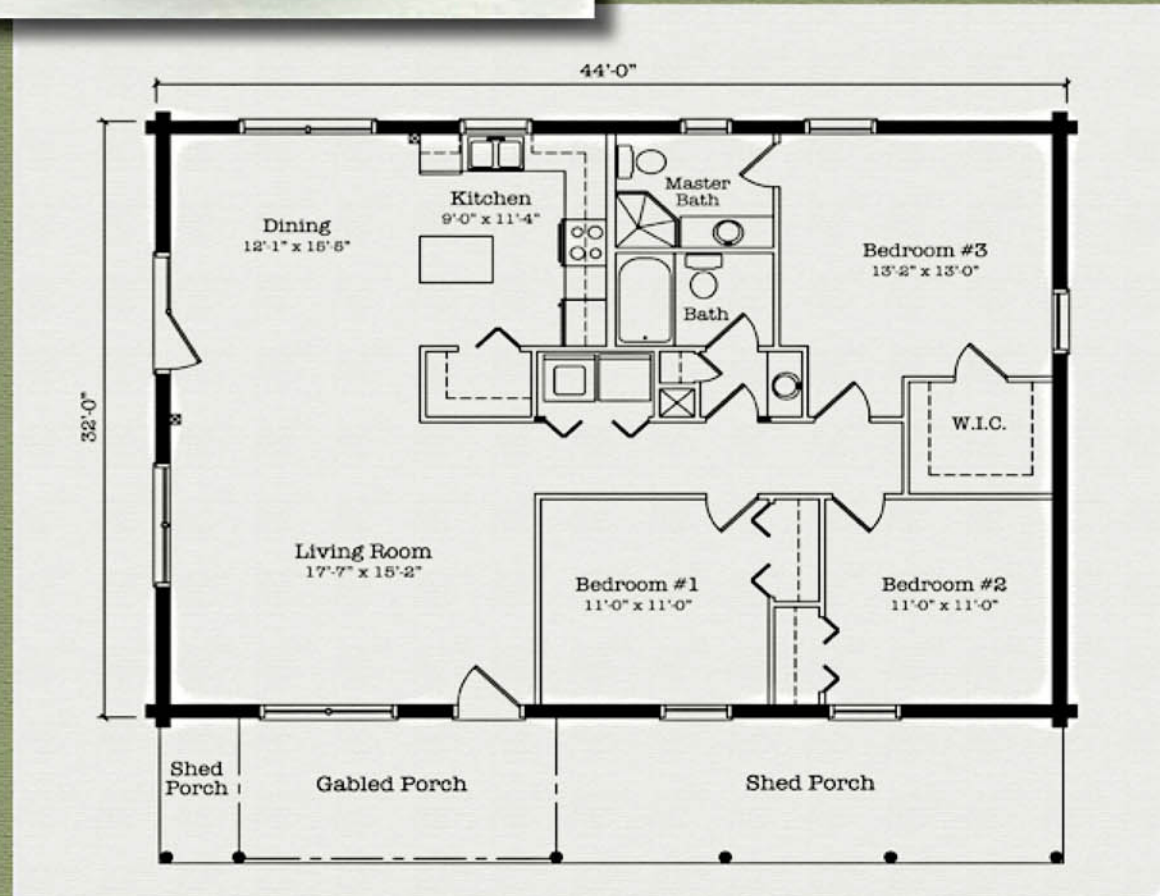
Spacious Single Level Living.

Hamilton Flatts
 32' x 44' Single Level
 2 or 3 Bedrooms
 2 Baths.
 1408 Total sq. ft.

Note: To view an optional floor plan for this cabin and other cabins visit our web site; www.adventurelogcabins.com

Adventure Fact:

"Green" building with a renewable resource that has a high thermal mass for greater energy efficiency.

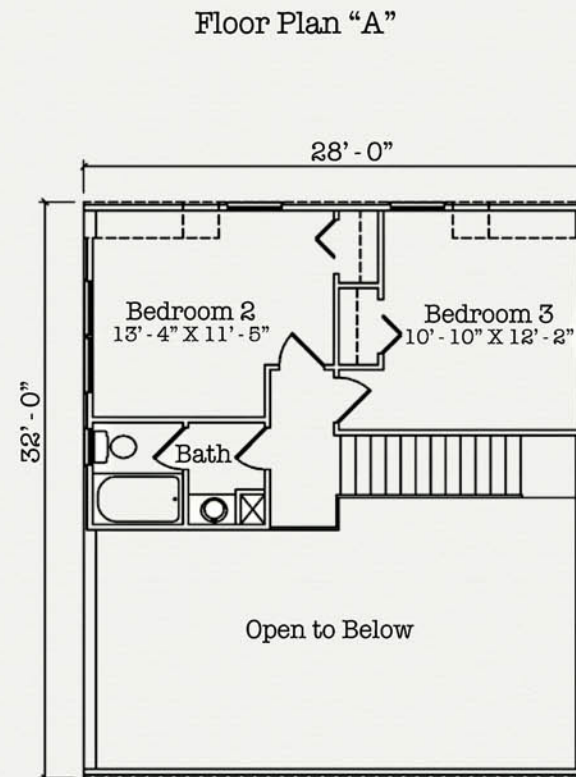
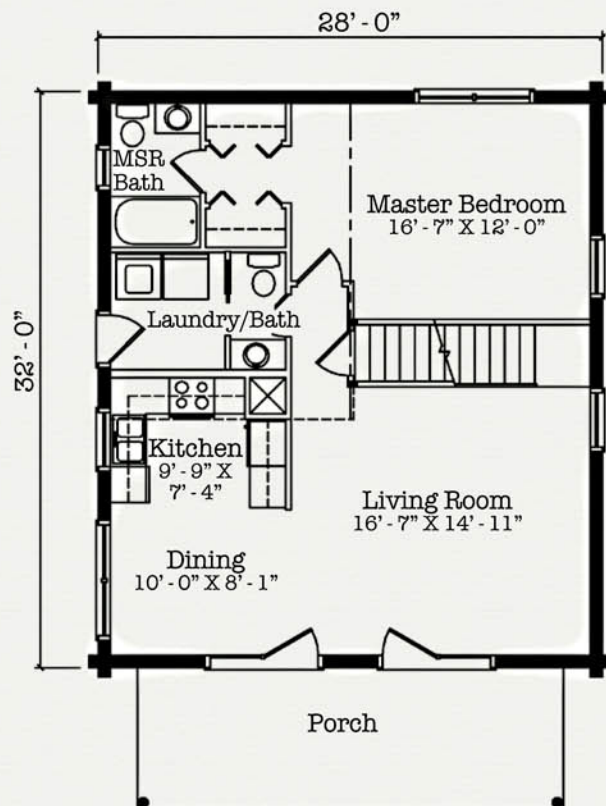


Adventure is a state of mind - and spirit. *Jacqueline Cochran*



Venture Quest 1309 Sq. Ft.

Venture Quest is the perfect choice for families looking for log cabin comfort with enough room to spread out and relax. Available with 2 or 3 bedrooms and a second full bath upstairs. Venture Quest offers privacy for family and friends.



Available in two different floor plans.

Venture Quest:
28' x 32' Double Level
2 or 3 Bedrooms
2 1/2 Baths.
896 sq. ft.. First Floor
413 sq. ft. Second Floor
1309 Total sq. ft.

Note: To view the optional floor plan for this cabin and other cabins visit our web site; www.adventurelogcabins.com

Adventure Fact:
We offer a limited lifetime warranty on all log elements.

"It is only in adventure that some people succeed in knowing"



Dawsons Paradise 1120 Sq. Ft.

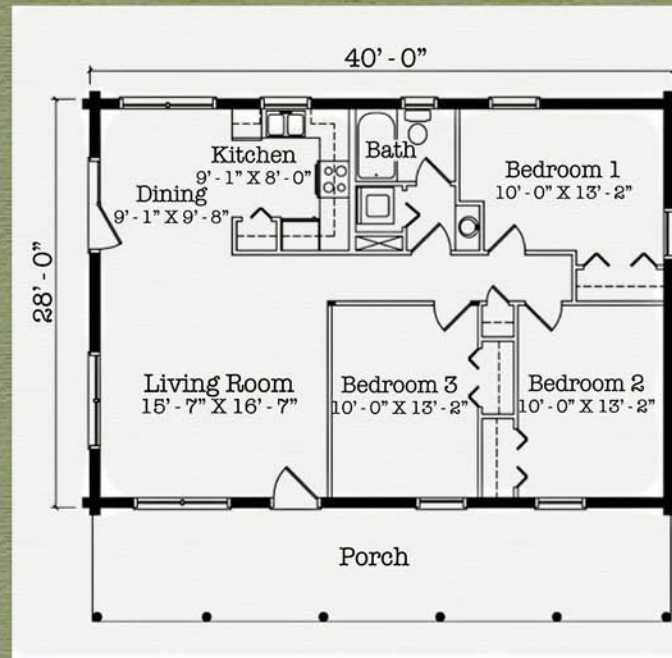
Dawsons Paradise is an open floor plan cabin that is ideal for family fun, or as a hunting or fishing camp for friends. Available with 2 or 3 bedrooms, and the choice of 1 or 2 full baths Dawsons Paradise has the flexibility to fit your needs.

**Available in
 two different
 floor plans.**

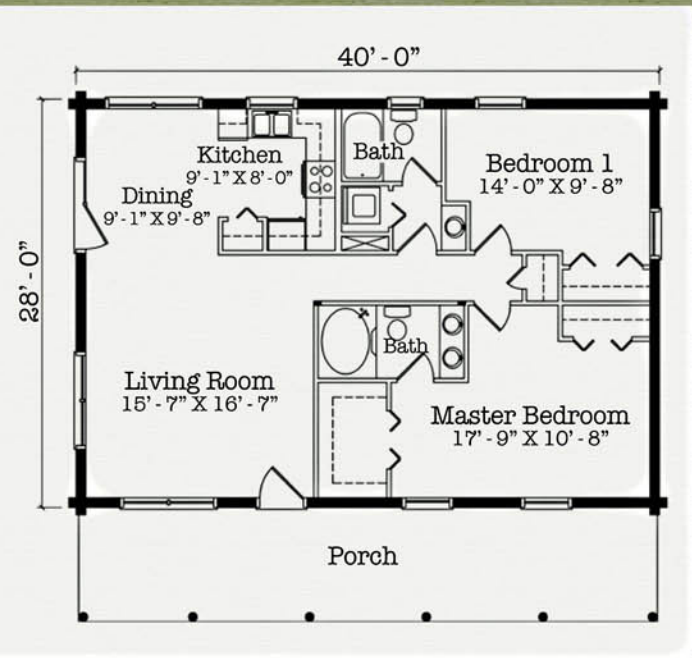
Dawsons Paradise:
 28' x 40' Single Level
 2 or 3 Bedrooms
 1 or 2 Baths
 1120 sq. ft.

Adventure Fact:
 Our kiln-dried logs minimize warping and shrinking. This produces a better fit and finish to your Cabin.

Floor Plan "A"



Floor Plan "B"



themselves - in finding themselves." *Andre Gide*



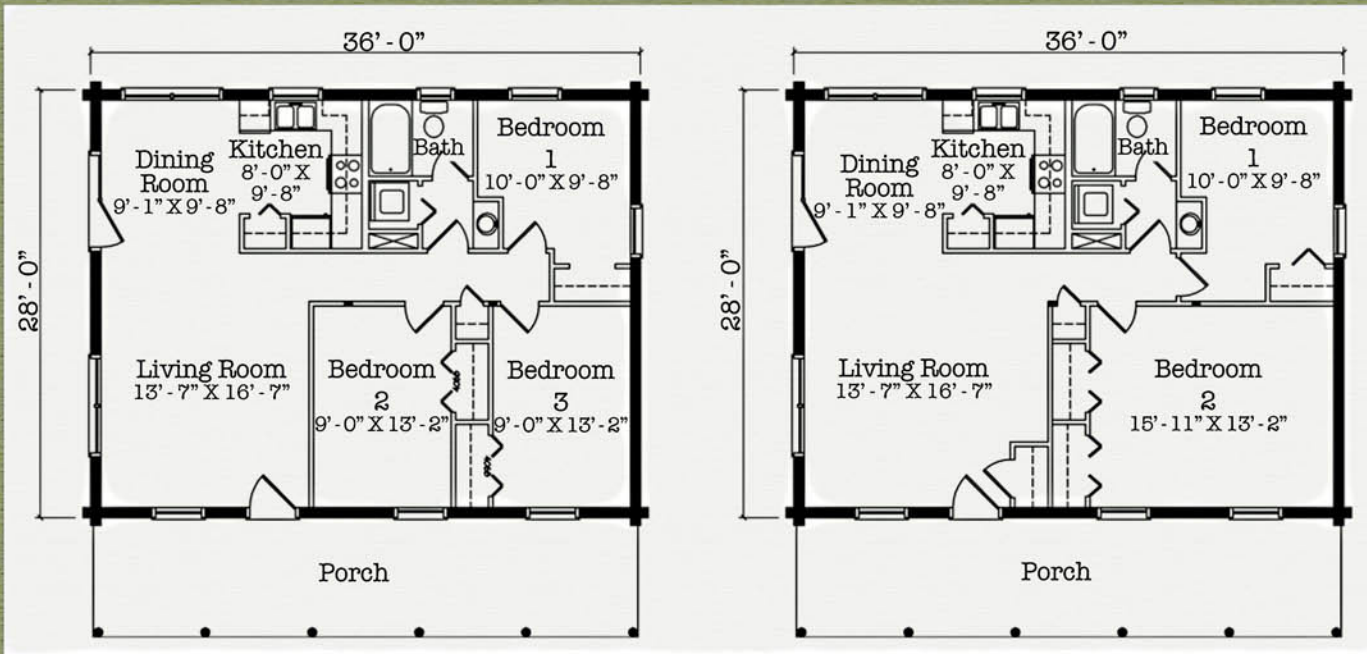
Scottas Retreat 1008 Sq. Ft.

Scottas Retreat is a single level open floor plan with the flexibility of either 2 or 3 bedrooms. A great choice for a family retreat or outings with friends. The 8' covered porch runs the full length of the cabin.



Floor Plan "A"

Floor Plan "B"



**Available in
two different
floor plans.**

Scottas Retreat:
28' x 36' Single Level
2 or 3 Bedrooms
1 Bath
1008 sq. ft.

Adventure Fact:
Our logs are inspected and
grade-stamped to National
Timber Products Inspection
guidelines.

“One of the best ways to get the most out of life is to look upon it as



Rising Sun 977 Sq. Ft.

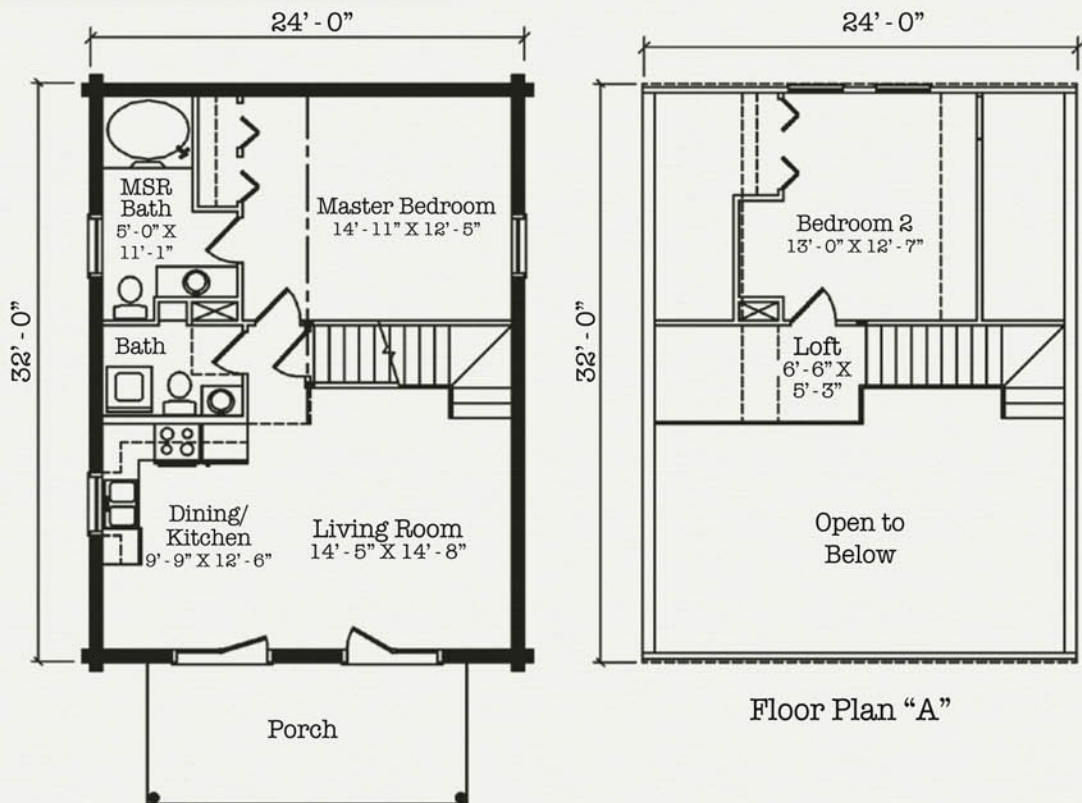
Rising Sun has an open floor plan with a cathedral ceiling in the living and dining area. It is an ideal cabin with plenty of space for friends and family. Available with 2 or 3 bedrooms, and the choice of 1 or 1 1/2 baths, Rising Sun makes a great getaway.

**Available in
 two different
 floor plans.**

Rising Sun:
 24' x 32' Double Level
 2 or 3 Bedrooms
 768 sq. ft.. First Floor
 209 sq. ft. Second Floor.
 977 Total sq. ft.

Note: To view the optional floor plan for this cabin and other cabins visit our web site; www.adventurelogcabins.com

Adventure Fact:
 Penetreat log preservative is included in the log package.

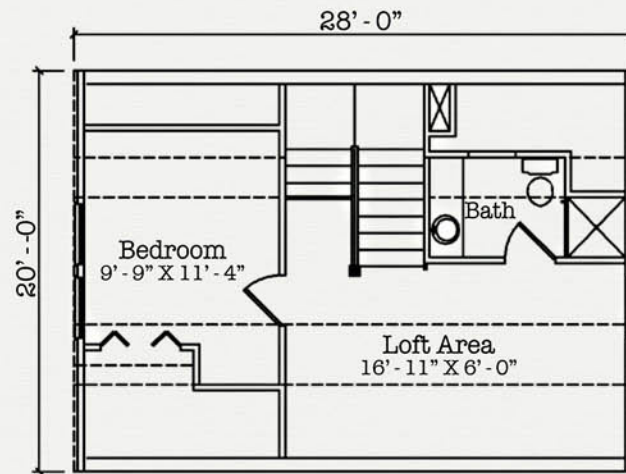
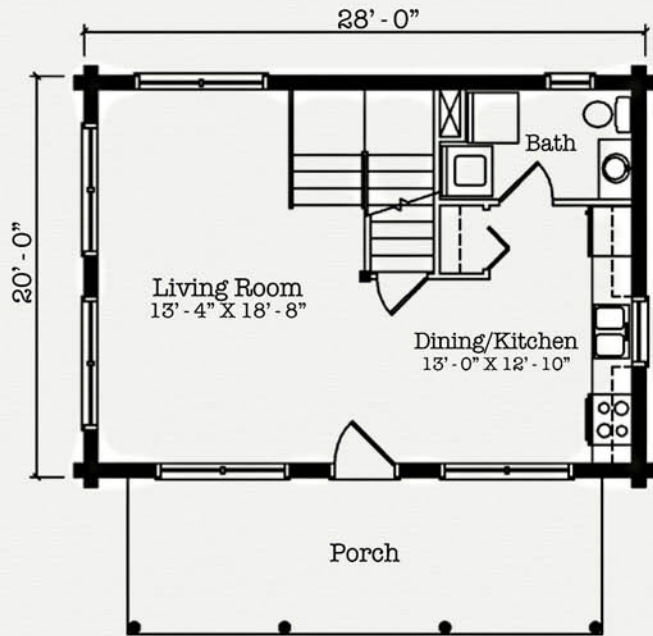


an adventure" William Feather



North Fork 882 Sq. Ft.

North Fork is a two level open floor plan "right-sized" for weekend activities and holiday getaways. A great choice for a family retreat or outings with friends. The 8' covered porch is the perfect spot to share the day's adventures.



Floor Plan "A"

Available in two different floor plans.

North Fork:
20' x 28' Double Level
1 or 2 bedrooms
560 sq. ft.. First Floor
322 sq. ft. Second Floor
882 Total sq. ft.

Note: To view the optional floor plan for this cabin and other cabins visit our web site; www.adventurelogcabins.com

Adventure Fact:
We offer toll-free customer service and builder support.

“The biggest adventure you can take is to live the life of your



Whitney Rapids 869 Sq. Ft.

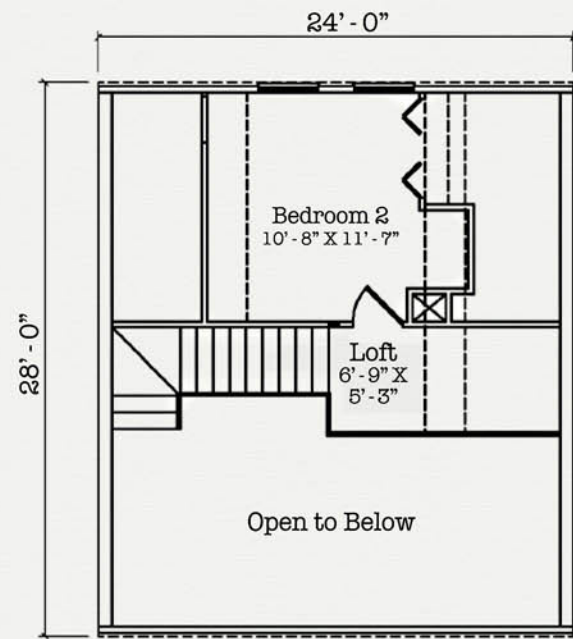
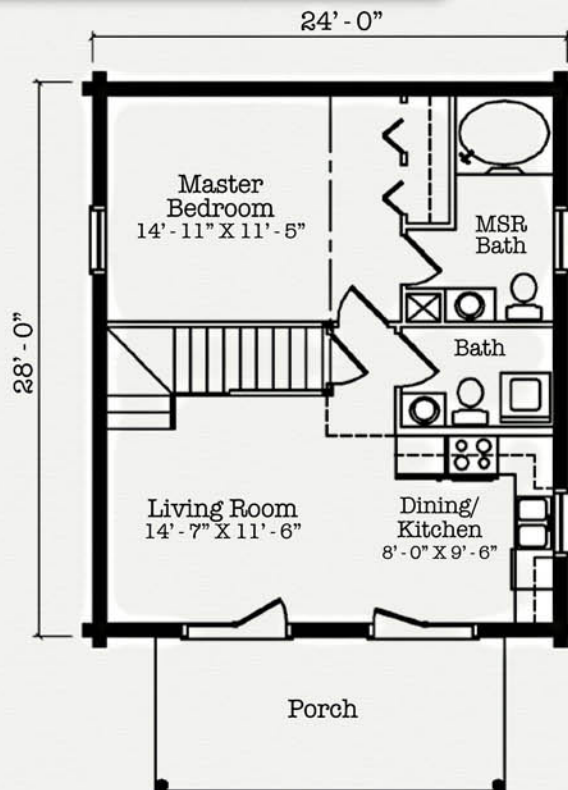
Whitney Rapids has an open floor plan with a cathedral ceiling in the living and dining area. It makes a great place to kick back at the end of the day. Available with 2 or 3 bedrooms, Whitney Rapids has the flexibility and the space to make a great “base camp” for all of your adventures.

Available in two different floor plans.

Whitney Rapids:
 24' x 28' Double Level
 2 or 3 Bedrooms
 1 or 1 1/2 Baths
 672 sq. ft.. First Floor
 196 sq. ft. Second Floor
 868 Total sq. ft.

Note: To view the optional floor plan for this cabin and other cabins visit our web site; www.adventurelogcabins.com

Adventure Fact:
 Nationwide “Best-In-Class”
 Customer Service.



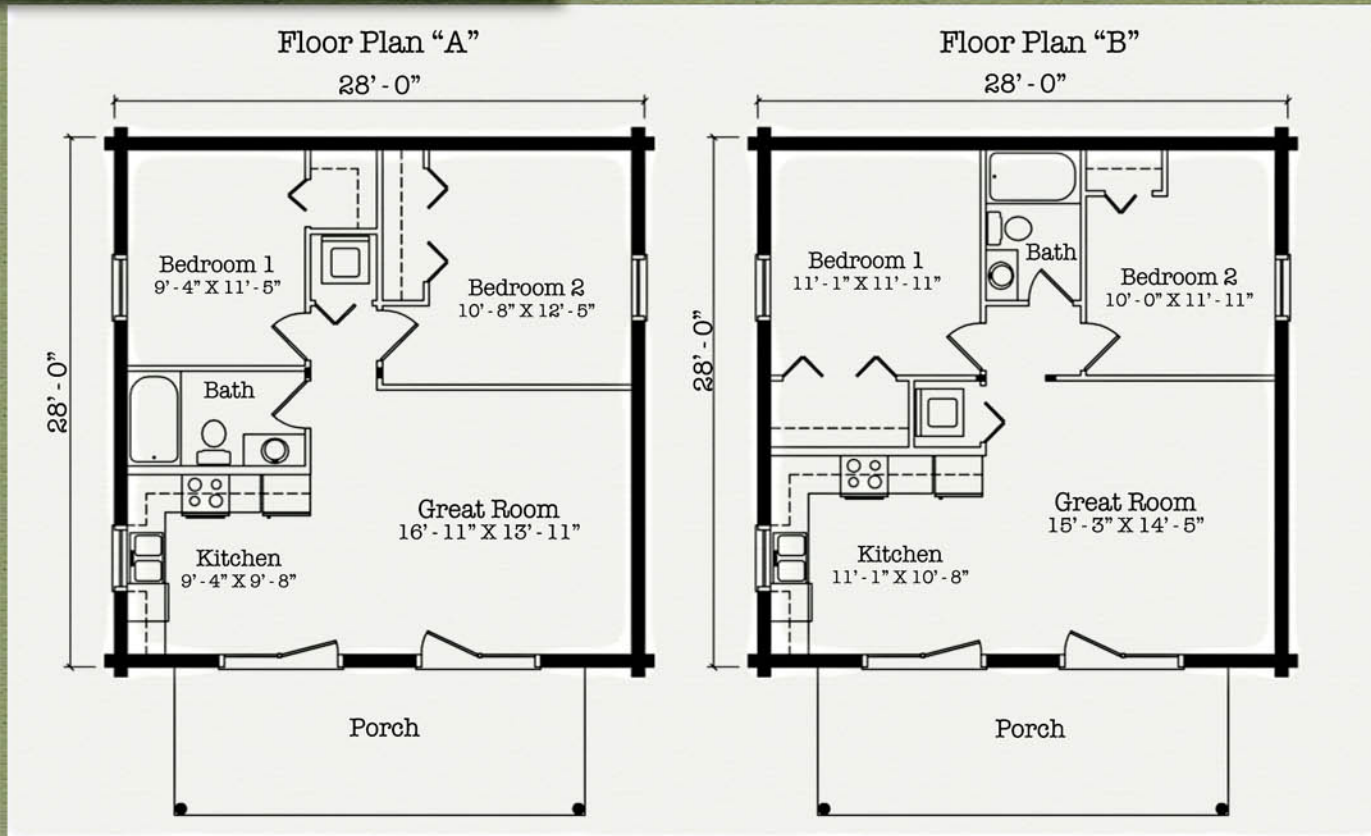
Floor Plan "A"

dreams." Oprah Winfrey



Sandy Oaks 784 Sq. Ft.

Sandy Oaks is a single level cabin, sized as a weekend retreat. A choice of 2 different floor plans with 2 bedrooms means you can fit Sandy Oaks to your individual needs. With double doors that open onto a gabled front porch, Sandy Oaks adds style to your outdoor setting.



**Available in
two different
floor plans.**

Sandy Oaks:
28' x 28' Single Level
2 bedrooms
1 Bath
784 sq. ft.

Adventure Fact:

Jim Barna Log and Timber Homes provide classes and seminars designed to meet the needs of both buyers and builders.

"We should come home from adventures... every day with new



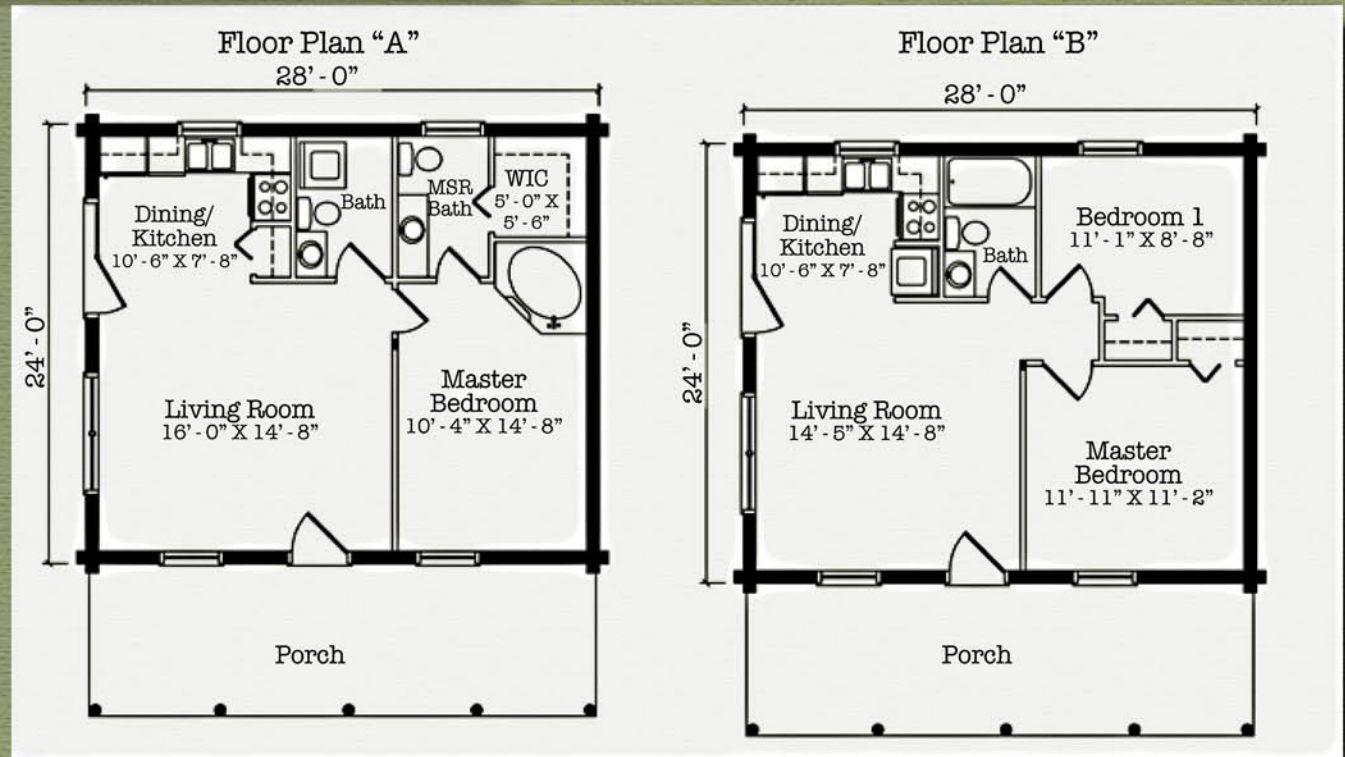
Gray Drake 672 Sq. Ft.

The Gray Drake makes a cozy place to getaway and forget the work day troubles. Available with 1 or 2 bedrooms and 1 or 1 1/2 baths, Gray Drake lets you bring the amenities of city living to the "Great Outdoors." It's ideal as a feature packed fishing or hunting retreat.

**Available in
 two different
 floor plans.**

Gray Drake:
 24' x 28' Single Level
 1 or 2 Bedrooms
 1 or 1 1/2 Baths
 672 sq. ft.

Adventure Fact:
 Construction and mortgage financing is available for your cabin through our nationwide financial partnerships.

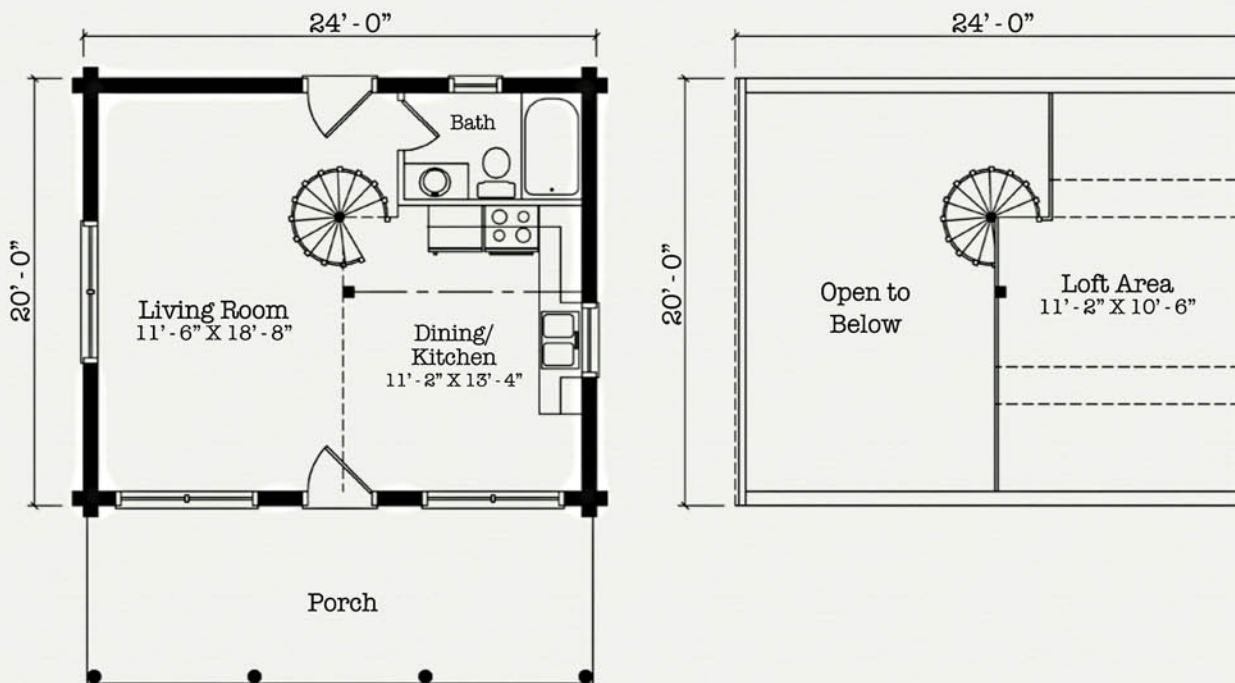


experience and character” *Henry David Thoreau*



Huckleberry Falls 600 Sq. Ft.

Huckleberry Falls is a double level cabin with a circular stair way that leads you up to the sleeping / storage loft area. The open floor plan of Huckleberry Falls maximizes the space with an open roomy feel.



A Cozy Getaway.

Huckleberry Falls:
20' x 24' Double Level
1 Loft bedroom
480 sq. ft.. on the First Floor
120 sq. ft. Second Floor
600 total sq. ft.

Adventure Fact:

Our logs are inspected and grade-stamped to National Timber Product Inspection guidelines.

"I have learned that the richness of life is found in adventure . . .



Clingmans Roost 576 Sq. Ft.

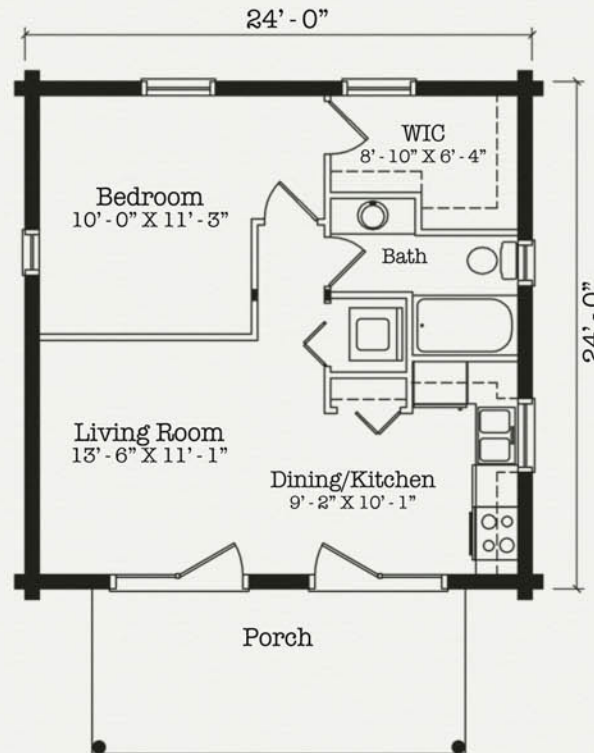
Clingmans Roost makes a great weekend adventure destination. Available with one or two bedrooms, Clingmans Roost is ideal as a fishing or hunting cabin, or a quiet getaway for artists & writers, or those just looking for pure cabin living.

**Available in
 two different
 floor plans.**

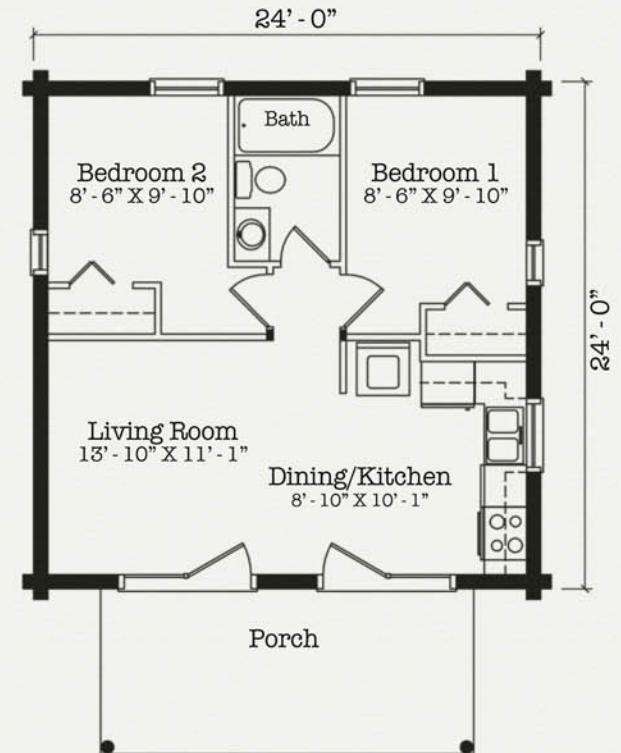
Clingmans Roost:
 24' x 24' Single Level
 1 or 2 Bedrooms
 1 Bath
 576 sq. ft.

Adventure Fact:
 We offer a limited lifetime
 warranty on all log elements.

Floor Plan "A"



Floor Plan "B"

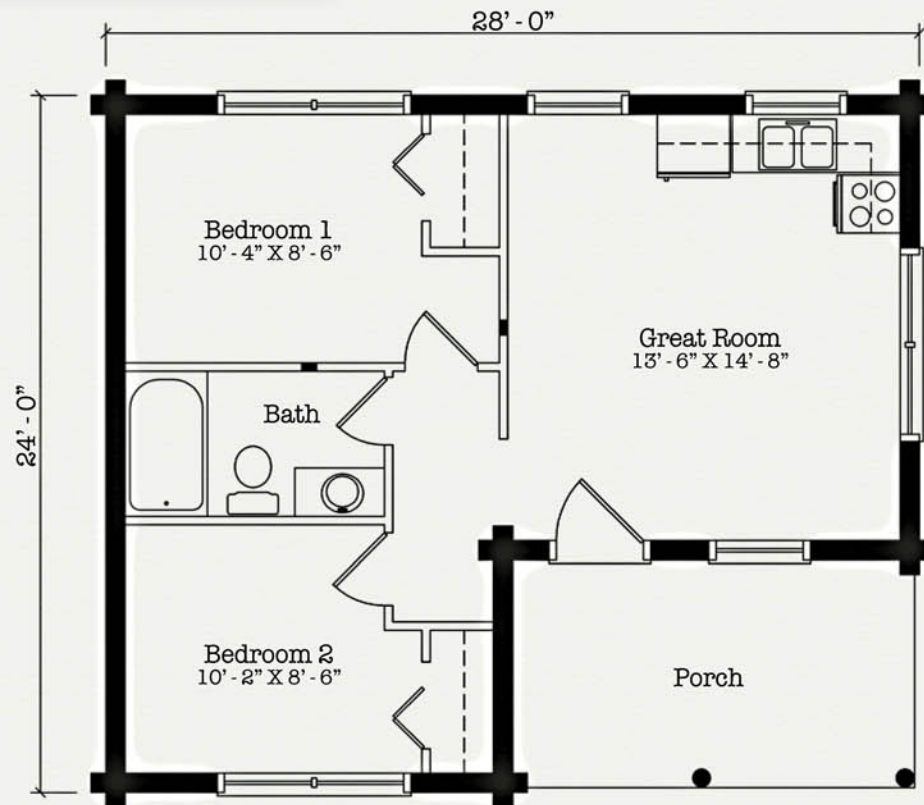


Life then teems with excitement." *William Orville Douglas*



Hares Ear 560 Sq. Ft.

Hares Ear is a single level open floor plan cabin. With two bedrooms, Hares Ear makes a terrific fishing or hunting cabin retreat for family and friends. The covered front porch is a great spot to begin your adventurous day.



A Retreat for the Soul.

Hares Ear:
24' x 28' Single Level
2 Bedrooms
1 Bath
560 sq. ft.

Adventure Fact:

Penetreat log preservative is included in the Adventure Series materials package.

“There is no end to the adventures that we can have if only we seek

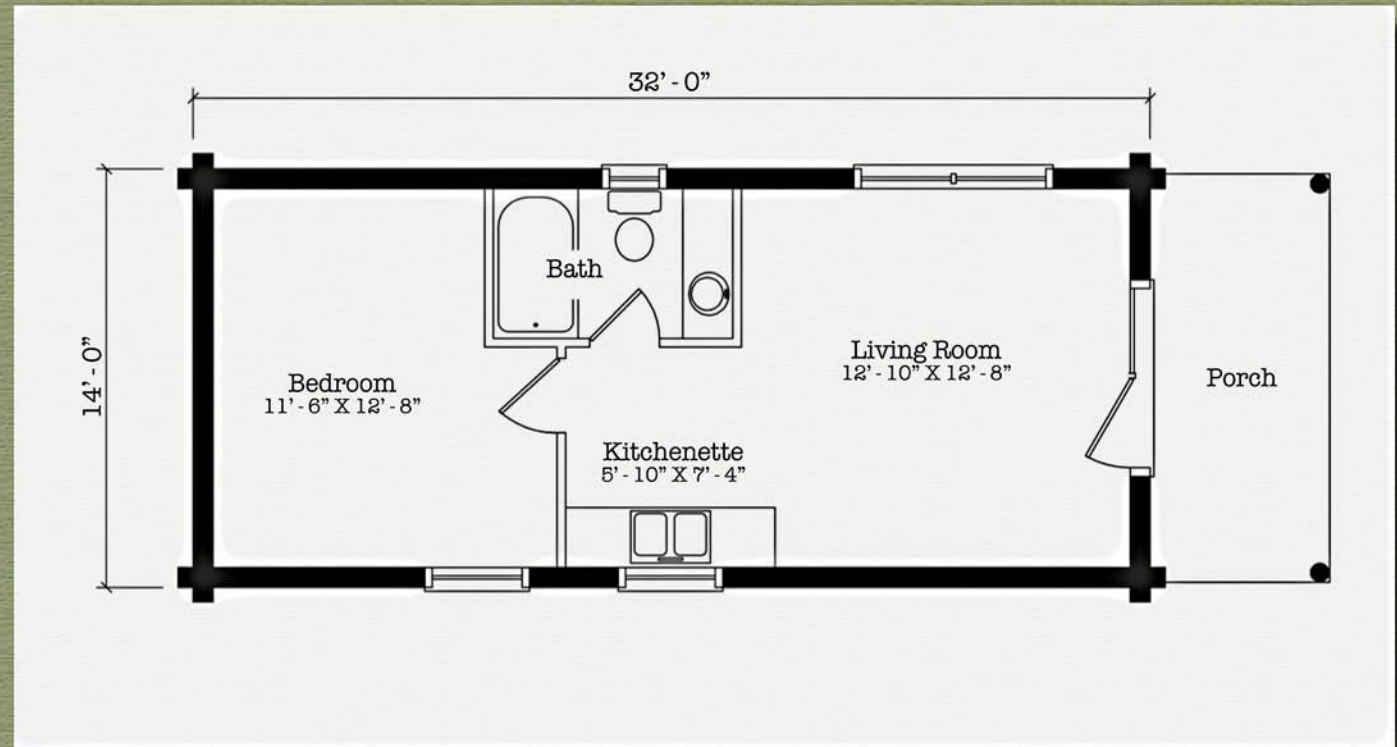


Bearhat Mountain 448 Sq. Ft.

Bearhat Mountain is the perfect choice for special places. At 448 square feet of living space the 14 x 32 foot design can be “tucked away” in places too tight for other designs. Bearhat Mountain makes a perfect “base camp” with enough space for fishing & hunting buddies to share your adventures.

Adventure Living Sized Right.

Bearhat Mountain:
 14' x 32' Single Level
 One Bedroom
 1 Bath
 448 sq. ft.



Adventure Fact:
 “Green” building with a renewable resource that has a high thermal mass for greater energy efficiency.

them with our eyes open.” *Jawaharial Nehru*



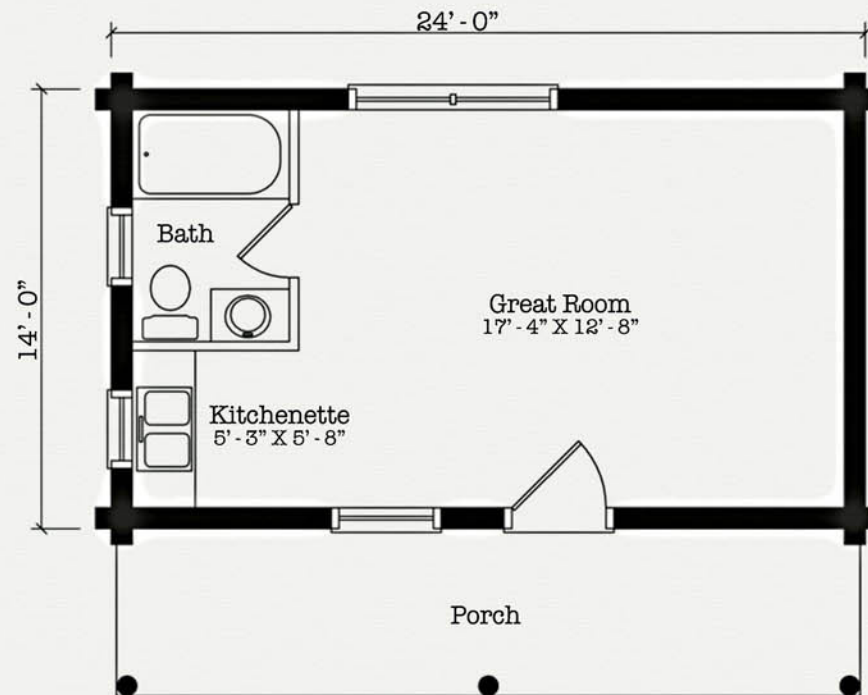
Trout Branch 336 Sq. Ft.

At 336 square feet of living space, Trout Branch is the smallest of the Adventure Series Cabins. The open floor plan gives you the flexibility to tailor Trout Branch to your individual needs. Trout Branch is the perfect hideaway for “Weekend Explorers” everywhere.



The Perfect Hide-Away.

Trout Branch:
14' x 24' Single Level
Great Room Floor Plan
1 Bath
336 sq. ft.



Adventure Fact:
We offer controlled shipping of your Adventure Log Cabin kit through a dedicated log home carrier.

New Design: Forrester



173 Sq. Ft.

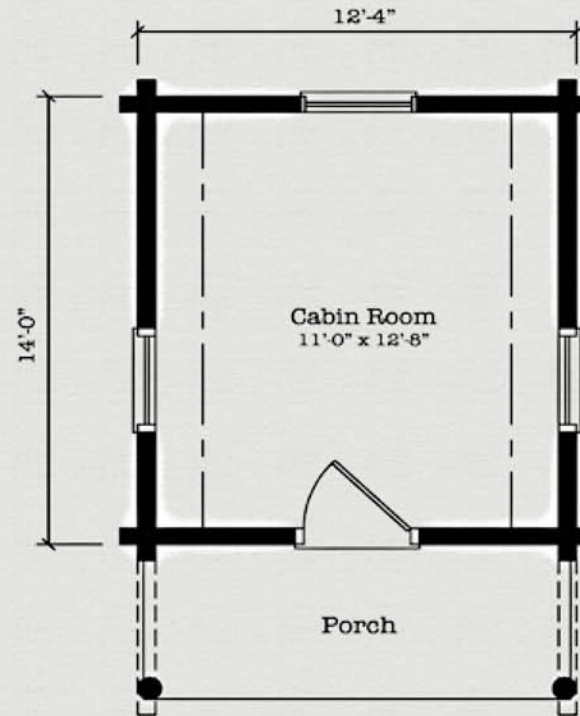
Forrester is ideal for remote locations and offers great value for those looking for a small single-room log cabin. Forrester works well as guest quarters or a private retreat.

**A Great Choice
for Hard to
Reach Locations.**

Forrester
14'0" x 12'4" Single Level
Single Room
173 Total sq. ft.

Adventure Fact:

Our kiln-dried logs minimize warping and shrinking. This produces a better fit and finish to your Cabin.





Your New Adventure Awaits...

Sportsman's Adventure Series Package....

The Standard Adventure Series Package includes:

- Subfloor framing
- Subfloor sheathing
- Deck support post treated
- Deck framing treated
- 5/4 Decking treated
- Hi-Stack random length logs
- Girder & Heavy Timber upper beams
- 2" T&G Second floor sheathing
- 2x4 gable & dormer framing
- 7/16 OSB wall sheathing
- Wavy edge siding for dormers & gables
- LVL Ridge & Support Posts
- 2 x 12 rafters 24" on center
- 5/8 OSB roof sheathing
- Roof underlayment
- Exterior wood windows & doors
- Exterior 1x6 trim
- Drip cap & subfloor trim
- Exposed Heavy Timber porch rafters, beams & posts
- 2" T&G porch roof sheathing
- Porch Roof underlayment
- 1x Soffitt
- 1x & 2x Fascia



Hi-Stack Log

Optional Upgrades....

You can customize and finish your Adventure Series Cabin with these great upgrades, available with any package option.

- Aluminum Clad Exterior Windows & Doors
- Full log gables
- Heavy 4x rafter system (uncut)
- Round rafters & beams (precut)
- Built-up roof system



Adventure Series Cabins are Backed by America's Log Home Leader....

Your investment in an Adventure Series Cabin is sound. It's built and backed by Jim Barna Log and Timber Homes! Creating and delivering log homes, Jim Barna Log and Timber Homes stands as the undisputed leader in innovative design and quality log homes. Our passion for quality is seen in everything we do.

Contact your local distributor to show you how to start your "Adventure" today.



Distributed by:

